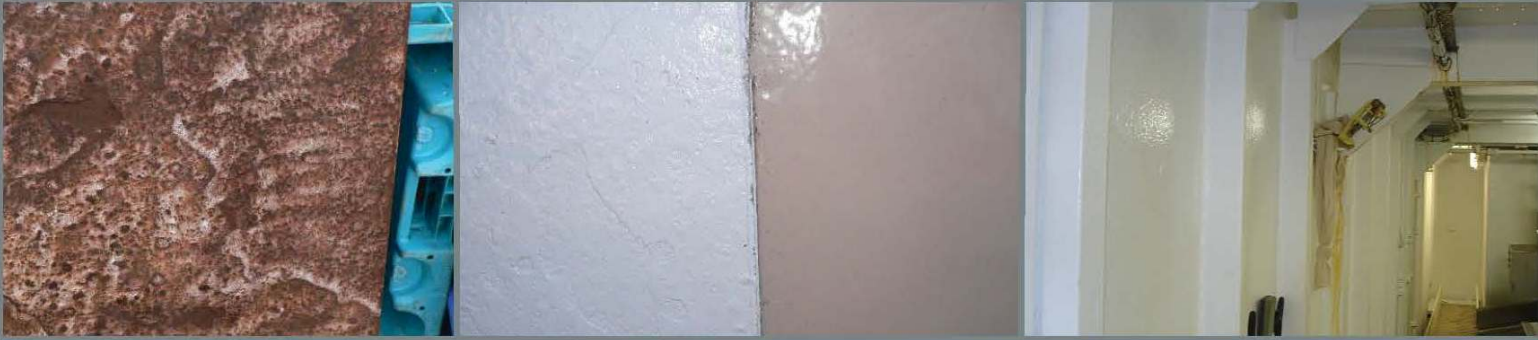


POLYUREA COATING



POLYUREA ELASTOMERIC BONDED COATING - PROPERTIES

Polyurea is a specialised application which cures within 30 seconds and once applied leaves a rubber / plastic finish. It is maintenance free, meets all health and hygiene requirements, is easily cleaned, extremely tough and corrosion resistant. The application is used in the marine industry, for the lining of fish holds and fish handling decks. It can also be used as a tank lining as it is chemical and oil resistant. Other uses include linings for pipework, water reservoirs, aquariums, swimming pools and basements.

Photo 1: metal plate prior to treatment. **Photo 2:** same plate after polyurea encasement. **Photo 3:** factory deck walls after treatment.

FISH HANDLING DECKS

WORKS CARRIED OUT



When used on steel surfaces such as the walls and ceilings of fish handling decks, minimal preparation of corroded areas are required; either by aqua blasting or disc sanding. Once this is done, a sealer coat is applied prior to the encasement coating.

The coating can be applied from 2-3 mm thickness upwards. Once applied the application cures within 30 seconds. The encasement now leaves a rubbery/plastic type surface which cannot be penetrated by oxygen, moisture, water or salts which in turn means that no corrosion can occur. Areas encased over a period of time have shown no corrosion compared to areas painted as normal during usual maintenance painting.

Photo 4: factory deck prior to treatment. **Photo 5:** close up of wall prior to treatment. **Photo 6:** factory deck several months after treatment.

WORKS IN PROGRESS

The application is applied by trained personnel using specialised equipment.

The materials used are of the highest quality which are sourced from the worlds leaders in the manufacturing of polyurea materials.

Photo 7: factory deck during application.

Photo 8: factory deck after application.



CASE STUDY - POLYUREA COATING FISH HOLD



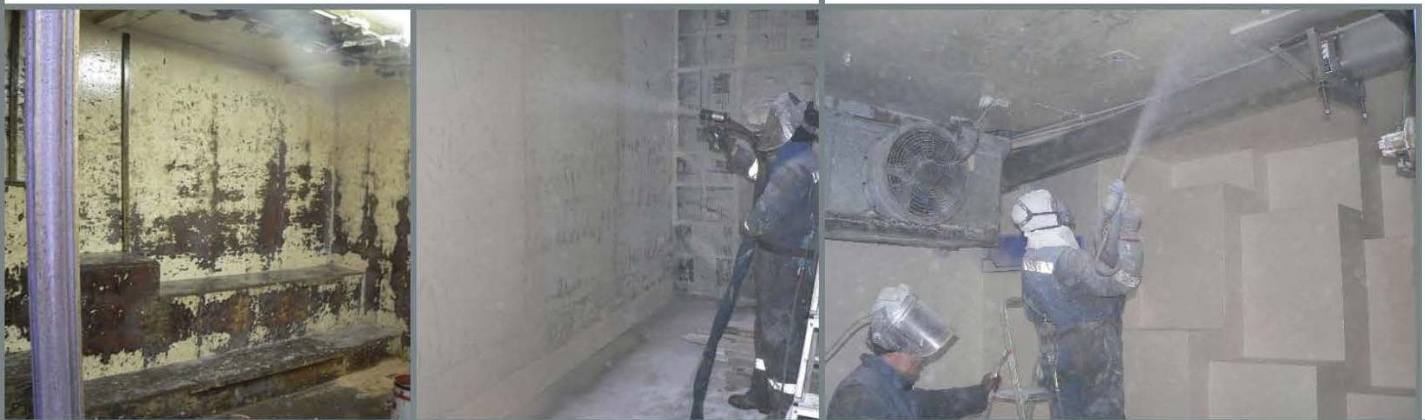
POLYUREA COATING - FISH HOLD

Customer: Harvest Hope Trawler Refurbishment **Location:** Internal Ship Hall at Peterhead Harbour

Specification: 1. Fishroom insulation injection behind linings, 2. Repair and replace damaged wall linings, 3. Apply Bonded Encasement application to all surfaces, 4. Apply Anti Bacterial Hygiene coating over all surfaces.

Photo 1: fish hold before treatment. **Photo 2:** cleaning during treatment. **Photo 3:** fish hold after polyurea treatment.

WORKS CARRIED OUT



The encasement of fish hold surfaces have proven very popular due to the fact that once applied it not only enhances the appearance of the hold but it also seals all joints, corners and edges which means no water can penetrate or seep out from behind bulkheads, steps etc. This enables fish room surfaces to be kept clinically clean without any risk of surface deterioration when cleaning down with pressure washing equipment. The coating also boosts insulation values which ultimately improves the quality of the catch. To further enhance the encasement coating; an anti bacterial coating is applied which will kill any bacteria which may come into contact with the surfaces.

Photo 4: fish hold walls prior to treatment. **Photos 5 & 6:** during application.

WORKS COMPLETE

Prior to the refurbishments, any damaged linings or alterations can be carried out as well as injection of any insulation materials into steps, bulkheads and deckheads. Once this is complete a primer sealer coat is applied with specialised equipment and highly skilled operators.

The application sets within 30 seconds and leaves a rubbery/ plastic finish which is impact resistant and very tough.



Photo 7: encasement coating complete. **Photo 8:** encasement coating with anti bacterial application.